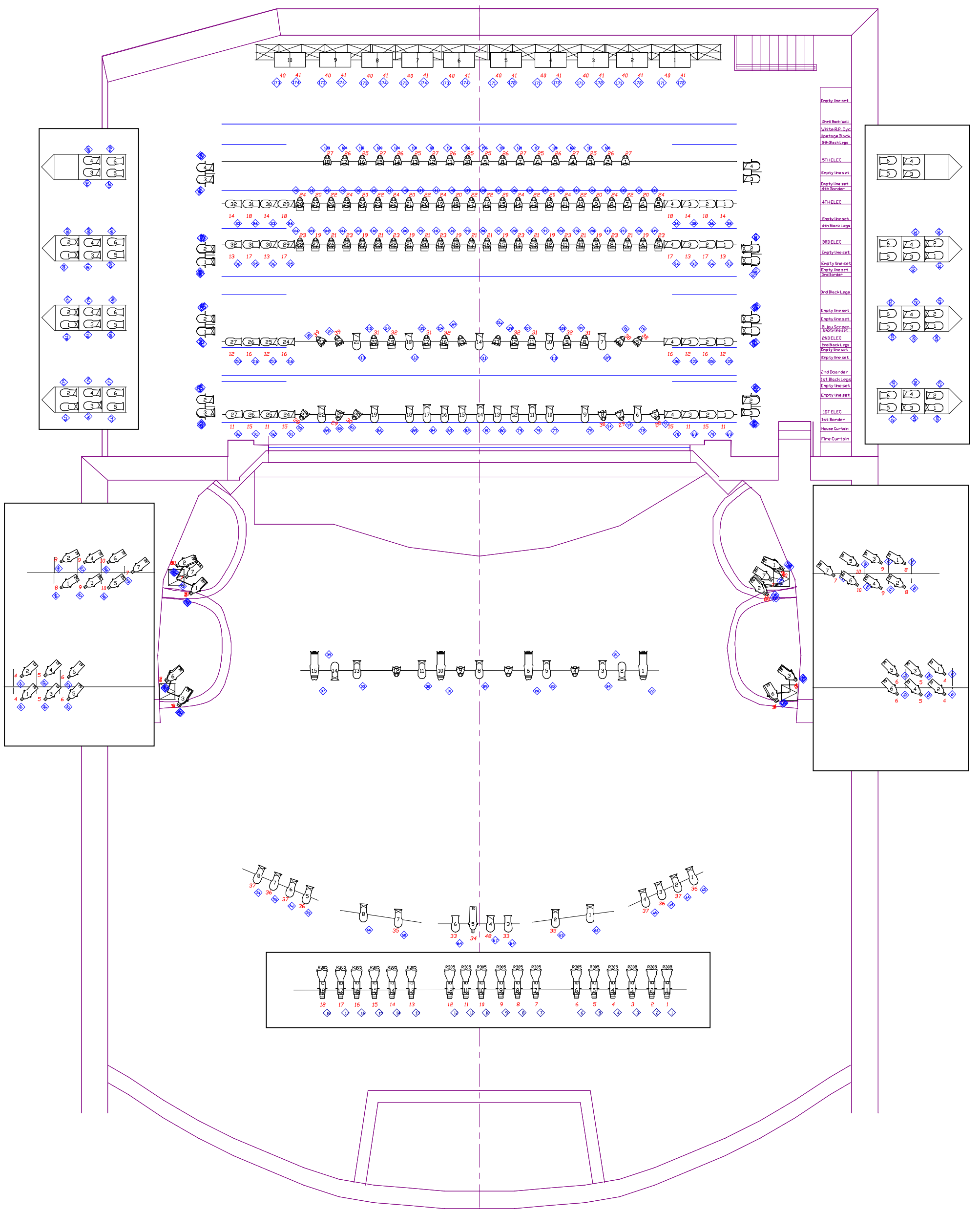




Fitzgerald Theater Lighting Info Pack

Production Manager – Tom Campbell
651- 290-1486
tcampbell@mpr.org

Updated - January 22, 2008



The Fitzgerald Theater The House Lighting Plot

10 East Exchange Street, St. Paul, MN

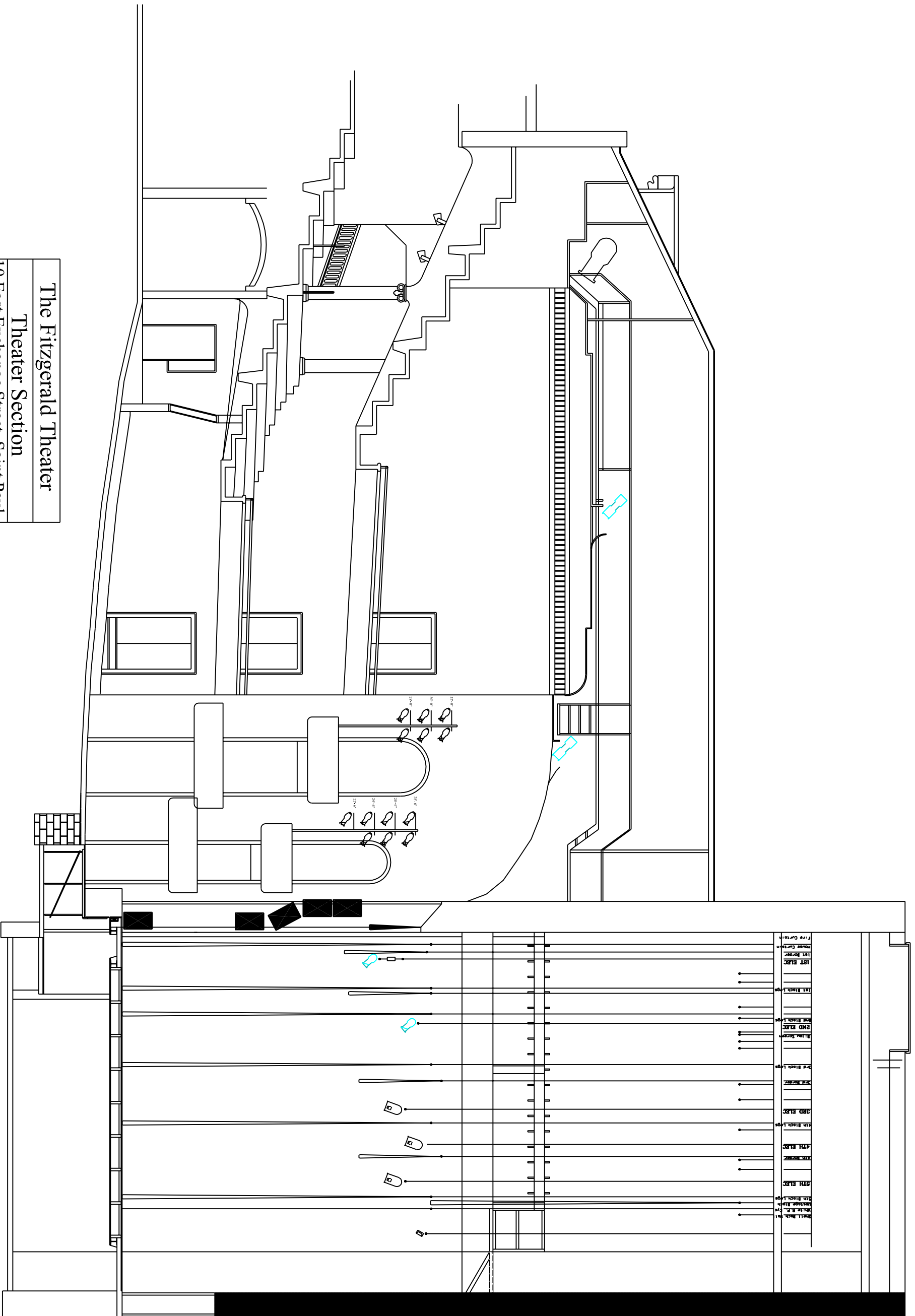
Scale: 1/8" to 1'-0"

Drawn By: TAC

Updated: 2/14/06

Notes:





The Fitzgerald Theater

Theater Section

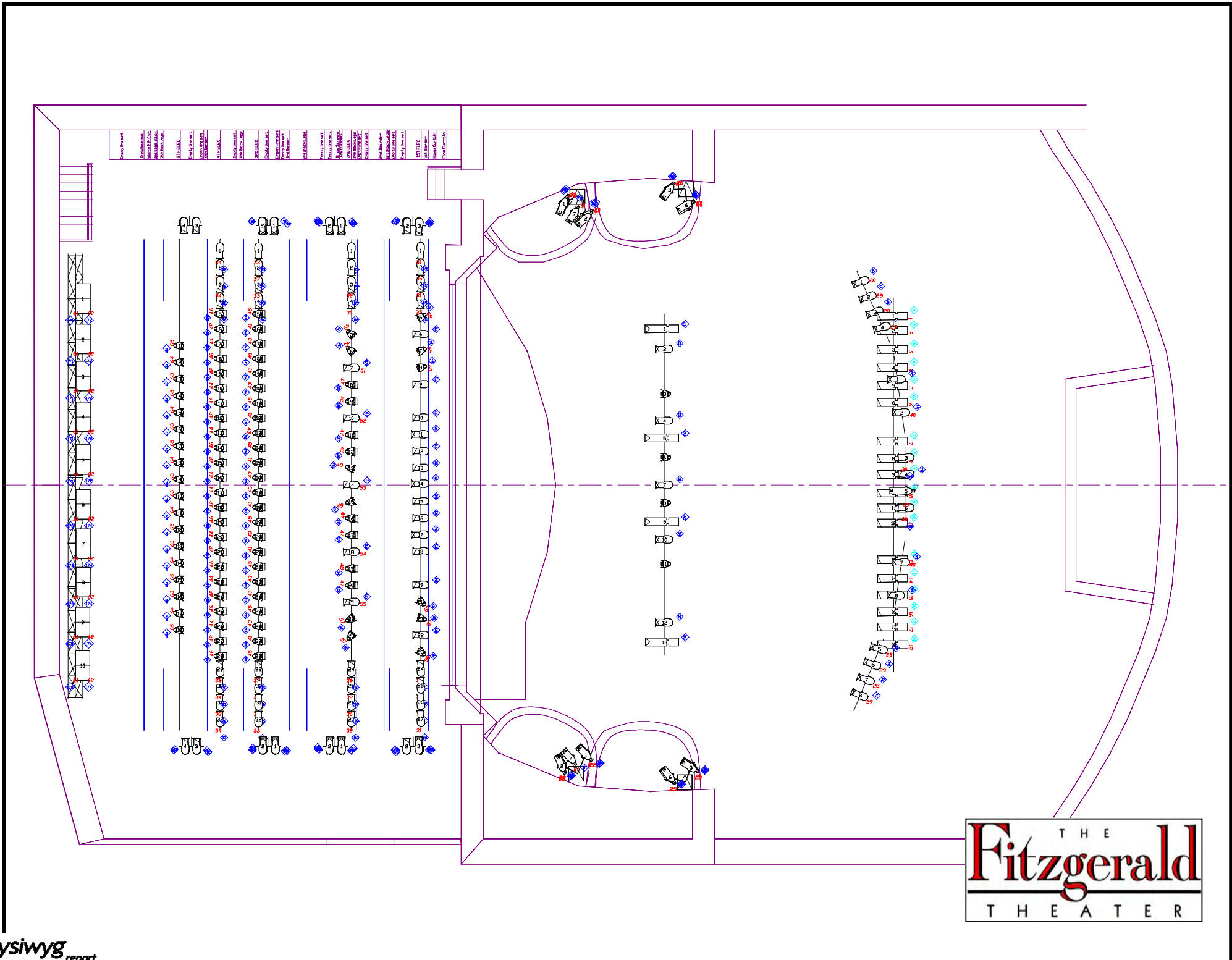
10 East Exchange Street, Saint Paul

Scale: 1/4" to 1'-0"

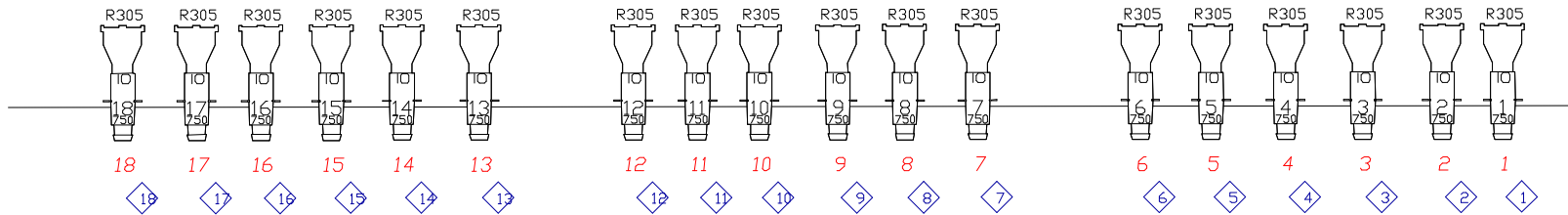
Updated: 07/01/02

Drawn by: Sam Campbell

Notes:



2nd Catwalk



Instrument Schedule(2 Cat)

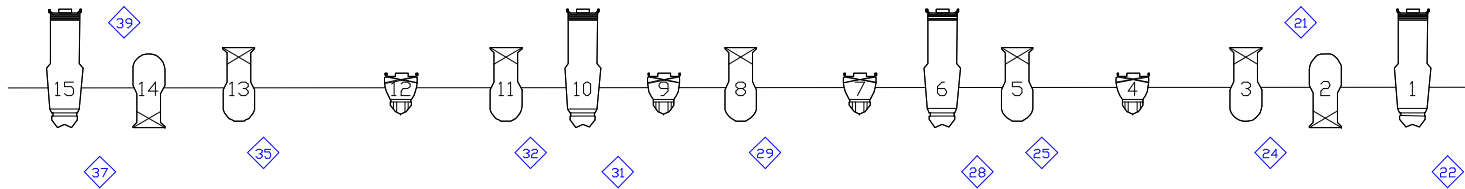
Venue: Fitzgerald Theater
Designer: Mike Wangen

Show: House Plot
Assistant: Tom Campbell

Position	Unit	Type	Lens	Wattage	Lamp	Dimmer	Channel	Colour	Gobo
2nd Catwalk	1	6.25" Colour Frame		0				R305	
2nd Catwalk	1	Source 4 750	10 De	750	HPL 75 1		1	R305	
2nd Catwalk	2	6.25" Colour Frame		0				R305	
2nd Catwalk	2	Source 4 750	10 De	750	HPL 75 2		2	R305	
2nd Catwalk	3	6.25" Colour Frame		0				R305	
2nd Catwalk	3	Source 4 750	10 De	750	HPL 75 3		3	R305	
2nd Catwalk	4	6.25" Colour Frame		0				R305	
2nd Catwalk	4	Source 4 750	10 De	750	HPL 75 4		4	R305	
2nd Catwalk	5	6.25" Colour Frame		0				R305	
2nd Catwalk	5	Source 4 750	10 De	750	HPL 75 5		5	R305	
2nd Catwalk	6	6.25" Colour Frame		0				R305	
2nd Catwalk	6	Source 4 750	10 De	750	HPL 75 6		6	R305	
2nd Catwalk	7	6.25" Colour Frame		0				R305	
2nd Catwalk	7	Source 4 750	10 De	750	HPL 75 7		7	R305	
2nd Catwalk	8	6.25" Colour Frame		0				R305	
2nd Catwalk	8	Source 4 750	10 De	750	HPL 75 8		8	R305	
2nd Catwalk	9	6.25" Colour Frame		0				R305	
2nd Catwalk	9	Source 4 750	10 De	750	HPL 75 9		9	R305	

THE
Fitzgerald
 THEATER

1st Catwalk



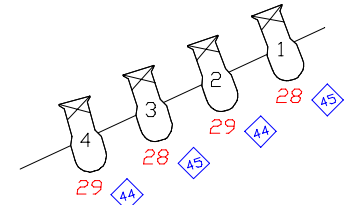
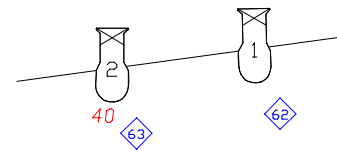
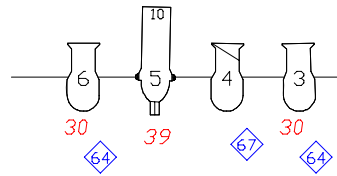
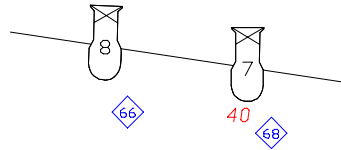
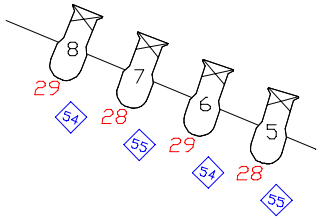
Instrument Schedule(1 Cat)

Venue: Fitzgerald Theater **Show:** House Plot
Designer: Mike Wangen **Assistant:** Tom Campbell

Position	Unit	Type	Lens	Wattage	Lamp	Dimmer	Channel	Colour	Gobo
1st Catwalk	1	Source 4 - 15/3		750	HPL 750W/'		22		
1st Catwalk	2	Alt 6x16		575	FLK		21		
1st Catwalk	3	Alt 6x16		575	FLK		24		
1st Catwalk	4	Source 4 Par	NSP	575	HPL 575W/'				
1st Catwalk	5	Alt 6x16		575	FLK		25		
1st Catwalk	6	Source 4 - 15/3		750	HPL 750W/'		28		
1st Catwalk	7	Source 4 Par	NSP	575	HPL 575W/'				
1st Catwalk	8	Alt 6x16		575	FLK		29		
1st Catwalk	9	Source 4 Par	NSP	575	HPL 575W/'				
1st Catwalk	10	Source 4 - 15/3		750	HPL 750W/'		31		
1st Catwalk	11	Alt 6x16		575	FLK		32		
1st Catwalk	12	Source 4 Par	NSP	575	HPL 575W/'				
1st Catwalk	13	Alt 6x16		575	FLK		35		
1st Catwalk	14	Alt 6x16		575	FLK		39		
1st Catwalk	15	Source 4 - 15/3		750	HPL 750W/'		37		



1st & 2nd Balcony Rails



Instrument Schedule(rail)

Venue: Fitzgerald Theater
 Designer: Mike Wangen

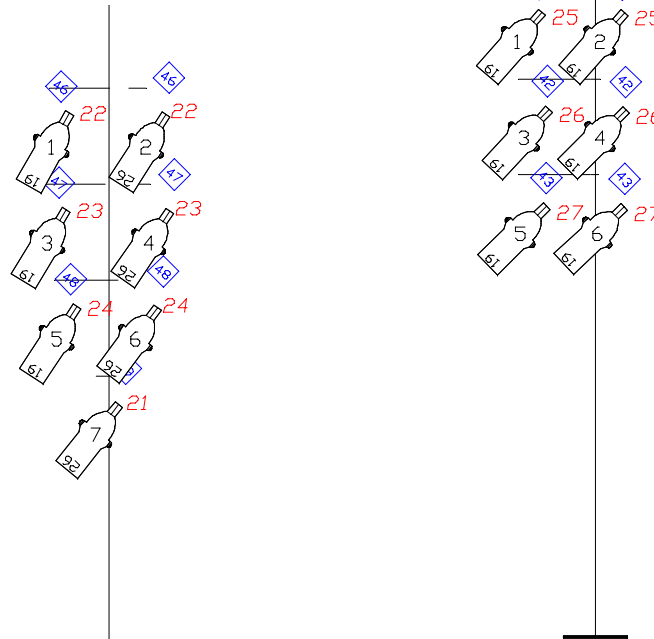
Show: House Plot
 Assistant: Tom Campbell

1/23/2008 15:59

Position	Unit	Type	Lens	Wattage	Lamp	Dimmer	Channel	Colour	Gobo	Purpose
2nd Balcony Rail	1	Alt 6x16		575	FLK	45	28			Balcony Wash
2nd Balcony Rail	2	Alt 6x16		575	FLK	44	29			Balcony Wash
2nd Balcony Rail	3	Alt 6x16		575	FLK	45	28			Balcony Wash
2nd Balcony Rail	4	Alt 6x16		575	FLK	44	29			Balcony Wash
2nd Balcony Rail	5	Alt 6x16		575	FLK	55	28			Balcony Wash
2nd Balcony Rail	6	Alt 6x16		575	FLK	54	29			Balcony Wash
2nd Balcony Rail	7	Alt 6x16		575	FLK	55	28			Balcony Wash
2nd Balcony Rail	8	Alt 6x16		575	FLK	54	29			Balcony Wash
1st Balcony Rail	1	Alt 6x16		575	FLK	62				1st Balcony Special
1st Balcony Rail	2	Alt 6x16		575	FLK	63	40			1st Balcony Special
1st Balcony Rail	3	Alt 6x9		575	FLK	64	30			Curtain Warmers
1st Balcony Rail	4	Alt 6x12		575	FLK	67				Crest up Light
1st Balcony Rail	5	Strand SL	SL 10	575	GLC	65	39			1st Balcony Special
1st Balcony Rail	6	Alt 6x9		575	FLK	64	30			Curtain Warmers
1st Balcony Rail	7	Alt 6x16		575	FLK	68	40			1st Balcony Special
1st Balcony Rail	8	Alt 6x16		575	FLK	66				1st Balcony Special

THE
Fitzgerald
 THEATER

1st & 2nd SL Box Booms



Instrument Schedule(SL Box)

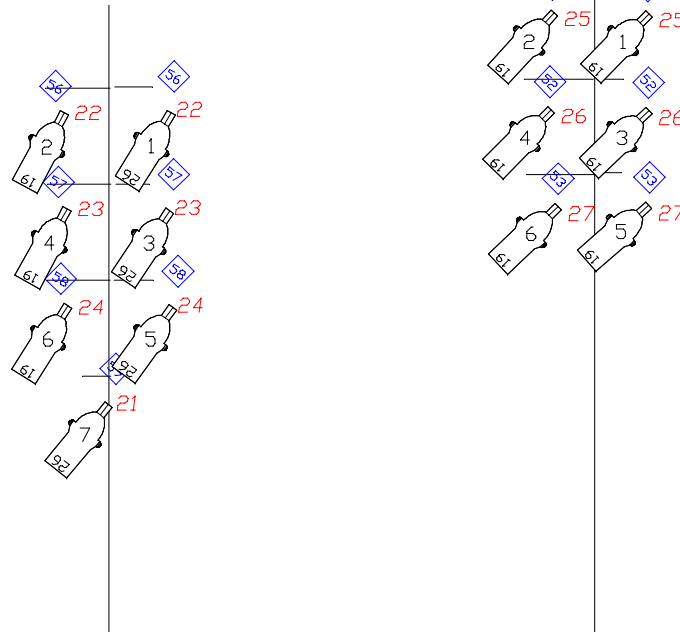
Venue: Fitzgerald Theater Show: House Plot
 Designer: Mike Wangen Assistant: Tom Campbell

1/23/2008 15:12

Position	Unit	Type	Lens	Wattage	Lamp	Dimmer	Channel	Colour	Gobo	Purpose
2nd Box Boom SL	1	Strand SL	SL 19	575	GLC	41	25			Box Wash
2nd Box Boom SL	2	Strand SL	SL 19	575	GLC	41	25			Box Wash
2nd Box Boom SL	3	Strand SL	SL 19	575	GLC	42	26			Box Wash
2nd Box Boom SL	4	Strand SL	SL 19	575	GLC	42	26			Box Wash
2nd Box Boom SL	5	Strand SL	SL 19	575	GLC	43	27			Box Wash
2nd Box Boom SL	6	Strand SL	SL 19	575	GLC	43	27			Box Wash
1st Box Boom SL	1	Strand SL	SL 19	575	GLC	46	22			Box Wash
1st Box Boom SL	2	Strand SL	SL 26	575	GLC	46	22			Box Wash
1st Box Boom SL	3	Strand SL	SL 19	575	GLC	47	23			Box Wash
1st Box Boom SL	4	Strand SL	SL 26	575	GLC	47	23			Box Wash
1st Box Boom SL	5	Strand SL	SL 19	575	GLC	48	24			Box Wash
1st Box Boom SL	6	Strand SL	SL 26	575	GLC	48	24			Box Wash
1st Box Boom SL	7	Strand SL	SL 26	575	GLC	49	21			Box Wash

THE
Fitzgerald
 THEATER

1st & 2nd SR Box Booms



Instrument Schedule(SR Box)

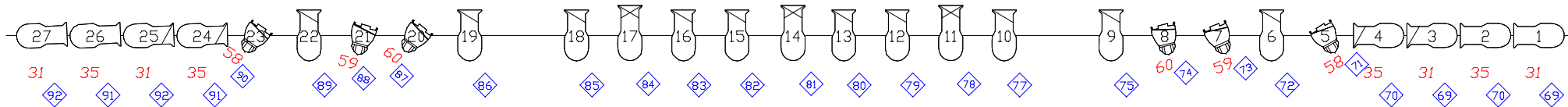
Venue: Fitzgerald Theater **Show:** House Plot
Designer: Mike Wangen **Assistant:** Tom Campbell

1/23/2008 15:13

Position	Unit	Type	Lens	Wattage	Lamp	Dimmer	Channel	Colour	Gobo	Purpose
2nd Box Boom SR	1	Strand SL	SL 19	1575	GLC	51	25			Box Wash
2nd Box Boom SR	2	Strand SL	SL 19	1575	GLC	51	25			Box Wash
2nd Box Boom SR	3	Strand SL	SL 19	1575	GLC	52	26			Box Wash
2nd Box Boom SR	4	Strand SL	SL 19	1575	GLC	52	26			Box Wash
2nd Box Boom SR	5	Strand SL	SL 19	1575	GLC	53	27			Box Wash
2nd Box Boom SR	6	Strand SL	SL 19	1575	GLC	53	27			Box Wash
1st Box Boom SR	1	Strand SL	SL 26	1575	GLC	56	22			Box Wash
1st Box Boom SR	2	Strand SL	SL 19	1575	GLC	56	22			Box Wash
1st Box Boom SR	3	Strand SL	SL 26	1575	GLC	57	23			Box Wash
1st Box Boom SR	4	Strand SL	SL 19	1575	GLC	57	23			Box Wash
1st Box Boom SR	5	Strand SL	SL 26	1575	GLC	58	24			Box Wash
1st Box Boom SR	6	Strand SL	SL 19	1575	GLC	58	24			Box Wash
1st Box Boom SR	7	Strand SL	SL 26	1575	GLC	59	21			Box Wash

THE
Fitzgerald
 THEATRE

1st Electric



Instrument Schedule(1 Elec)

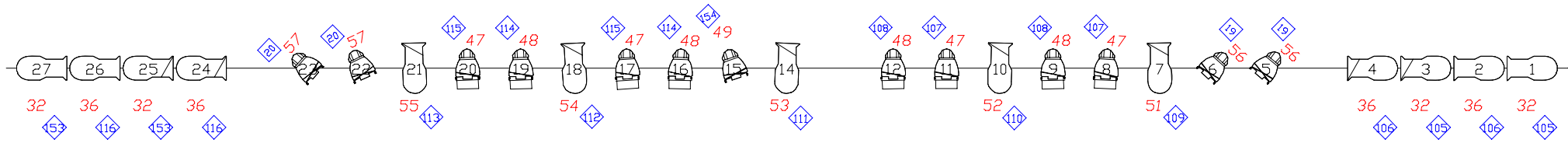
Venue: Fitzgerald Theater Show: House Plot
 Designer: Mike Wangen Assistant: Tom Campbell

1/23/2008 15:54

Position	Unit	Type	Lens	Wattage	Lamp	Dimmer	Channel	Colour	Gobo	Purpose
1st Electric	1	Alt 6x9		575	FLK	69	31			1st Elec Pipe Ends
1st Electric	2	Alt 6x9		575	FLK	70	35			1st Elec Pipe Ends
1st Electric	3	Alt 6x12		575	FLK	69	31			1st Elec Pipe Ends
1st Electric	4	Alt 6x12		575	FLK	70	35			1st Elec Pipe Ends
1st Electric	5	Source 4 P MFL		575	HPL 575W/1	71	58			1st Elec Par Sides
1st Electric	6	Alt 6x12		575	FLK	72				1st Elec Special
1st Electric	7	Source 4 P MFL		575	HPL 575W/1	73	59			1st Elec Par Sides
1st Electric	8	Source 4 P MFL		575	HPL 575W/1	74	60			1st Elec Par Sides
1st Electric	9	Alt 6x12		575	FLK	75				1st Elec Special
1st Electric	10	Alt 6x12		575	FLK	77				1st Elec Special
1st Electric	11	Alt 6x16		575	FLK	78				1st Elec Special
1st Electric	12	Alt 6x12		575	FLK	79				1st Elec Special
1st Electric	13	Alt 6x12		575	FLK	80				1st Elec Special
1st Electric	14	Alt 6x16		575	FLK	81				1st Elec Special
1st Electric	15	Alt 6x12		575	FLK	82				1st Elec Special
1st Electric	16	Alt 6x12		575	FLK	83				1st Elec Special
1st Electric	17	Alt 6x16		575	FLK	84				1st Elec Special
1st Electric	18	Alt 6x12		575	FLK	85				1st Elec Special
1st Electric	19	Alt 6x12		575	FLK	86				1st Elec Special
1st Electric	20	Source 4 P MFL		575	HPL 575W/1	87	60			1st Elec Par Sides
1st Electric	21	Source 4 P MFL		575	HPL 575W/1	88	59			1st Elec Par Sides
1st Electric	22	Alt 6x12		575	FLK	89				1st Elec Special
1st Electric	23	Source 4 P MFL		575	HPL 575W/1	90	58			1st Elec Par Sides
1st Electric	24	Alt 6x12		575	FLK	91	35			1st Elec Pipe Ends
1st Electric	25	Alt 6x12		575	FLK	92	31			1st Elec Pipe Ends
1st Electric	26	Alt 6x9		575	FLK	91	35			1st Elec Pipe Ends
1st Electric	27	Alt 6x9		575	FLK	92	31			1st Elec Pipe Ends

THE
Fitzgerald
 THEATER

2nd Electric



Instrument Schedule(2 Elec)

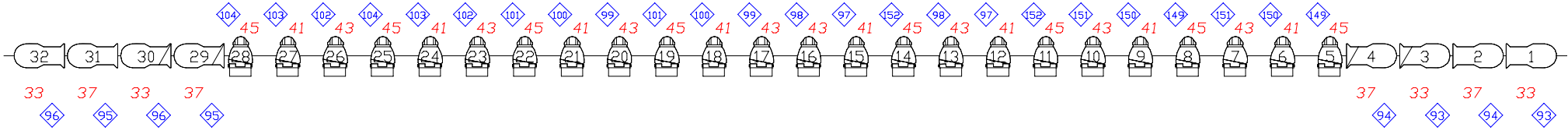
Venue: Fitzgerald Theater Show: House Plot
 Designer: Mike Wangen Assistant: Tom Campbell

1/23/2008 15:54

Position	Unit	Type	Lens	Wattage	Dimmer	Channel	Colour	Gobo	Purpose
2nd Electric	1	Alt 6x9		575	105	32			2nd Elec Pipe Ends
2nd Electric	2	Alt 6x9		575	106	36			2nd Elec Pipe Ends
2nd Electric	3	Alt 6x12		575	105	32			2nd Elec Pipe Ends
2nd Electric	4	Alt 6x12		575	106	36			2nd Elec Pipe Ends
2nd Electric	5	Source 4 P NSP		575	19	56			2nd Elec Diag Back
2nd Electric	6	Source 4 P NSP		575	19	56			2nd Elec Diag Back
2nd Electric	7	Alt 6x12		575	109	51			2nd Elec Special
2nd Electric	8	Source 4 P MFL		575	107	47	TH		2nd Elec Back
2nd Electric	9	Source 4 P MFL		575	108	48	TH		2nd Elec Back
2nd Electric	10	Alt 6x12		575	110	52			2nd Elec Special
2nd Electric	11	Source 4 P MFL		575	107	47	TH		2nd Elec Back
2nd Electric	12	Source 4 P MFL		575	108	48	TH		2nd Elec Back
2nd Electric	14	Alt 6x12		575	111	53			2nd Elec Special
2nd Electric	15	Source 4 P NSP		575	154	49			
2nd Electric	16	Source 4 P MFL		575	114	48	TH		2nd Elec Back
2nd Electric	17	Source 4 P MFL		575	115	47	TH		2nd Elec Back
2nd Electric	18	Alt 6x12		575	112	54			2nd Elec Special
2nd Electric	19	Source 4 P MFL		575	114	48	TH		2nd Elec Back
2nd Electric	20	Source 4 P MFL		575	115	47	TH		2nd Elec Back
2nd Electric	21	Alt 6x12		575	113	55			2nd Elec Special
2nd Electric	22	Source 4 P NSP		575	20	57			2nd Elec Diag Back
2nd Electric	23	Source 4 P NSP		575	20	57			2nd Elec Diag Back
2nd Electric	24	Alt 6x12		575	116	36			2nd Elec Pipe Ends
2nd Electric	25	Alt 6x12		575	153	32			2nd Elec Pipe Ends
2nd Electric	26	Alt 6x9		575	116	36			2nd Elec Pipe Ends
2nd Electric	27	Alt 6x9		575	153	32			2nd Elec Pipe Ends



3rd Electric



Instrument Schedule(3 Elec)

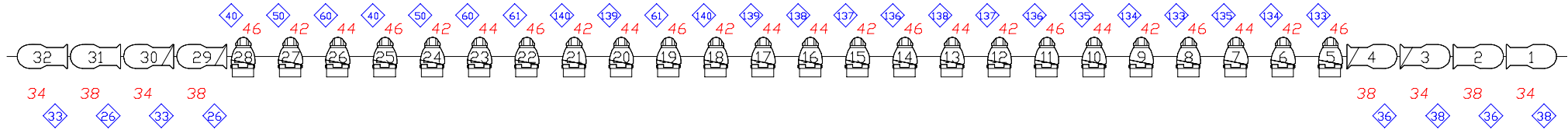
Venue: Fitzgerald Theater Show: House Plot
 Designer: Mike Wangen Assistant: Tom Campbell

1/23/2008 15:55

Position	Unit	Type	Lens	Wattage	Dimmer	Channel	Colour	Gobo	Purpose
3rd Electric	1	Alt 6x9		575	93	33			3rd Elec Pipe Ends
3rd Electric	2	Alt 6x9		575	94	37			3rd Elec Pipe Ends
3rd Electric	3	Alt 6x12		575	93	33			3rd Elec Pipe Ends
3rd Electric	4	Alt 6x12		575	94	37			3rd Elec Pipe Ends
3rd Electric	5	Source 4 P MFL		575	149	45	TH		3rd Eelec Backs
3rd Electric	6	Source 4 P MFL		575	150	41	TH		3rd Eelec Backs
3rd Electric	7	Source 4 P MFL		575	151	43	TH		3rd Eelec Backs
3rd Electric	8	Source 4 P MFL		575	149	45	TH		3rd Eelec Backs
3rd Electric	9	Source 4 P MFL		575	150	41	TH		3rd Eelec Backs
3rd Electric	10	Source 4 P MFL		575	151	43	TH		3rd Eelec Backs
3rd Electric	11	Source 4 P MFL		575	152	45	TH		3rd Eelec Backs
3rd Electric	12	Source 4 P MFL		575	97	41	TH		3rd Eelec Backs
3rd Electric	13	Source 4 P MFL		575	98	43	TH		3rd Eelec Backs
3rd Electric	14	Source 4 P MFL		575	152	45	TH		3rd Eelec Backs
3rd Electric	15	Source 4 P MFL		575	97	41	TH		3rd Eelec Backs
3rd Electric	16	Source 4 P MFL		575	98	43	TH		3rd Eelec Backs
3rd Electric	17	Source 4 P MFL		575	99	43	TH		3rd Eelec Backs
3rd Electric	18	Source 4 P MFL		575	100	41	TH		3rd Eelec Backs
3rd Electric	19	Source 4 P MFL		575	101	45	TH		3rd Eelec Backs
3rd Electric	20	Source 4 P MFL		575	99	43	TH		3rd Eelec Backs
3rd Electric	21	Source 4 P MFL		575	100	41	TH		3rd Eelec Backs
3rd Electric	22	Source 4 P MFL		575	101	45	TH		3rd Eelec Backs
3rd Electric	23	Source 4 P MFL		575	102	43	TH		3rd Eelec Backs
3rd Electric	24	Source 4 P MFL		575	103	41	TH		3rd Eelec Backs
3rd Electric	25	Source 4 P MFL		575	104	45	TH		3rd Eelec Backs
3rd Electric	26	Source 4 P MFL		575	102	43	TH		3rd Eelec Backs
3rd Electric	27	Source 4 P MFL		575	103	41	TH		3rd Eelec Backs
3rd Electric	28	Source 4 P MFL		575	104	45	TH		3rd Eelec Backs
3rd Electric	29	Alt 6x12		575	95	37			3rd Elec Pipe Ends
3rd Electric	30	Alt 6x12		575	96	33			3rd Elec Pipe Ends
3rd Electric	31	Alt 6x9		575	95	37			3rd Elec Pipe Ends
3rd Electric	32	Alt 6x9		575	96	33			3rd Elec Pipe Ends

THE
Fitzgerald
 THEATER

4th Electric



Instrument Schedule(4 Elec)

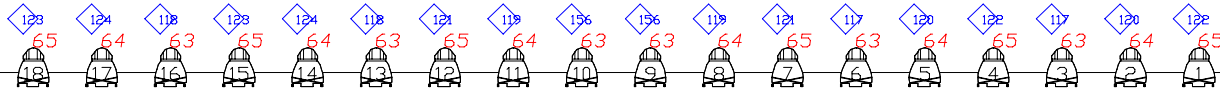
Venue: Fitzgerald Theater Show: House Plot
 Designer: Mike Wangen Assistant: Tom Campbell

1/23/2008 15:56

Position	Unit	Type	Lens	Wattage	Dimmer	Channel	Colour	Gobo	Purpose
4th Electric	1	Alt 6x9		575	38	34			4th Elec Pipe Ends
4th Electric	2	Alt 6x9		575	36	38			4th Elec Pipe Ends
4th Electric	3	Alt 6x12		575	38	34			4th Elec Pipe Ends
4th Electric	4	Alt 6x12		575	36	38			4th Elec Pipe Ends
4th Electric	5	Source 4 P MFL		575	133	46	TH		4th Elec Backs
4th Electric	6	Source 4 P MFL		575	134	42	TH		4th Elec Backs
4th Electric	7	Source 4 P MFL		575	135	44	TH		4th Elec Backs
4th Electric	8	Source 4 P MFL		575	133	46	TH		4th Elec Backs
4th Electric	9	Source 4 P MFL		575	134	42	TH		4th Elec Backs
4th Electric	10	Source 4 P MFL		575	135	44	TH		4th Elec Backs
4th Electric	11	Source 4 P MFL		575	136	46	TH		4th Elec Backs
4th Electric	12	Source 4 P MFL		575	137	42	TH		4th Elec Backs
4th Electric	13	Source 4 P MFL		575	138	44	TH		4th Elec Backs
4th Electric	14	Source 4 P MFL		575	136	46	TH		4th Elec Backs
4th Electric	15	Source 4 P MFL		575	137	42	TH		4th Elec Backs
4th Electric	16	Source 4 P MFL		575	138	44	TH		4th Elec Backs
4th Electric	17	Source 4 P MFL		575	139	44	TH		4th Elec Backs
4th Electric	18	Source 4 P MFL		575	140	42	TH		4th Elec Backs
4th Electric	19	Source 4 P MFL		575	61	46	TH		4th Elec Backs
4th Electric	20	Source 4 P MFL		575	139	44	TH		4th Elec Backs
4th Electric	21	Source 4 P MFL		575	140	42	TH		4th Elec Backs
4th Electric	22	Source 4 P MFL		575	61	46	TH		4th Elec Backs
4th Electric	23	Source 4 P MFL		575	60	44	TH		4th Elec Backs
4th Electric	24	Source 4 P MFL		575	50	42	TH		4th Elec Backs
4th Electric	25	Source 4 P MFL		575	40	46	TH		4th Elec Backs
4th Electric	26	Source 4 P MFL		575	60	44	TH		4th Elec Backs
4th Electric	27	Source 4 P MFL		575	50	42	TH		4th Elec Backs
4th Electric	28	Source 4 P MFL		575	40	46	TH		4th Elec Backs
4th Electric	29	Alt 6x12		575	26	38			4th Elec Pipe Ends
4th Electric	30	Alt 6x12		575	33	34			4th Elec Pipe Ends
4th Electric	31	Alt 6x9		575	26	38			4th Elec Pipe Ends
4th Electric	32	Alt 6x9		575	33	34			4th Elec Pipe Ends



5th Electric



Instrument Schedule(5 Elec)

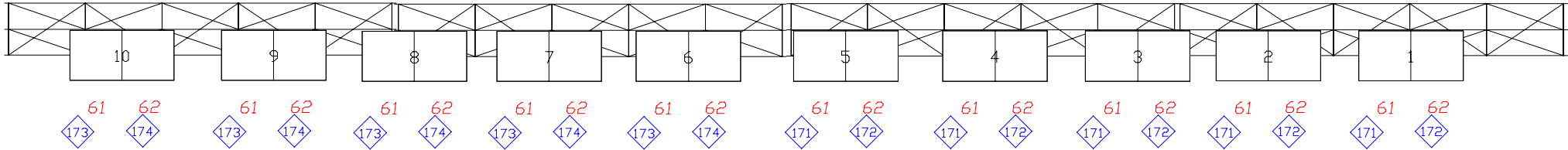
Venue: Fitzgerald Theater Show: House Plot
 Designer: Mike Wangen Assistant: Tom Campbell

1/23/2008 15:56

Position	Unit	Type	Lens	Wattage	Lamp	Dimmer	Channel	Colour	Gobo	Purpose
5th Electric	1	Source 4	NSP	575	HPL 575W/1:122	122	65			5th Elec Backs
5th Electric	2	Source 4	NSP	575	HPL 575W/1:120	120	64			5th Elec Backs
5th Electric	3	Source 4	NSP	575	HPL 575W/1:117	117	63			5th Elec Backs
5th Electric	4	Source 4	NSP	575	HPL 575W/1:122	122	65			5th Elec Backs
5th Electric	5	Source 4	NSP	575	HPL 575W/1:120	120	64			5th Elec Backs
5th Electric	6	Source 4	NSP	575	HPL 575W/1:117	117	63			5th Elec Backs
5th Electric	7	Source 4	NSP	575	HPL 575W/1:121	121	65			5th Elec Backs
5th Electric	8	Source 4	NSP	575	HPL 575W/1:119	119	64			5th Elec Backs
5th Electric	9	Source 4	NSP	575	HPL 575W/1:156	156	63			5th Elec Backs
5th Electric	10	Source 4	NSP	575	HPL 575W/1:156	156	63			5th Elec Backs
5th Electric	11	Source 4	NSP	575	HPL 575W/1:119	119	64			5th Elec Backs
5th Electric	12	Source 4	NSP	575	HPL 575W/1:121	121	65			5th Elec Backs
5th Electric	13	Source 4	NSP	575	HPL 575W/1:118	118	63			5th Elec Backs
5th Electric	14	Source 4	NSP	575	HPL 575W/1:124	124	64			5th Elec Backs
5th Electric	15	Source 4	NSP	575	HPL 575W/1:123	123	65			5th Elec Backs
5th Electric	16	Source 4	NSP	575	HPL 575W/1:118	118	63			5th Elec Backs
5th Electric	17	Source 4	NSP	575	HPL 575W/1:124	124	64			5th Elec Backs
5th Electric	18	Source 4	NSP	575	HPL 575W/1:123	123	65			5th Elec Backs



Cyc Electric



Instrument Schedule(Cyc)

Venue: Fitzgerald Theater
Designer: Mike Wangen

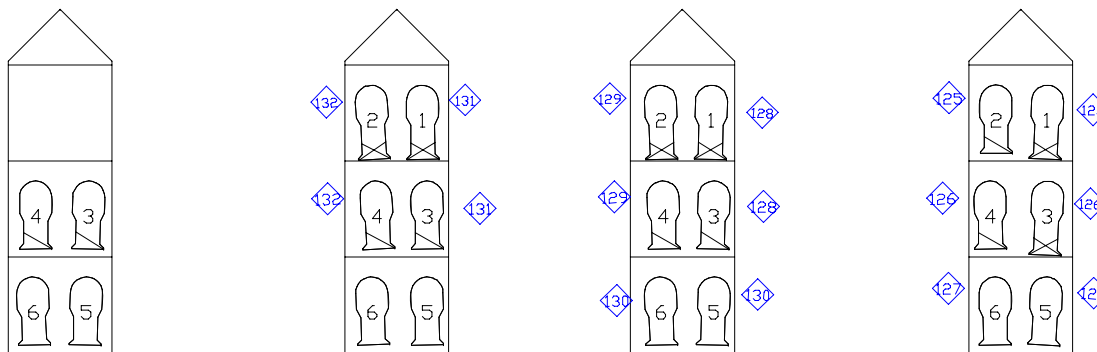
Show: House Plot
Assistant: Tom Campbell

1/23/2008 15:57

Position	Unit	Type	Lens	Wattage	Lamp	Dimmer	Channel	Colour	Gobo	Purpose
Cyc Truss	1	Strand Iris Cyc		2000	FFT	172/171	62/61			Cyc Wash
Cyc Truss	2	Strand Iris Cyc		2000	FFT	172/171	62/61			Cyc Wash
Cyc Truss	3	Strand Iris Cyc		2000	FFT	172/171	62/61			Cyc Wash
Cyc Truss	4	Strand Iris Cyc		2000	FFT	172/171	62/61			Cyc Wash
Cyc Truss	5	Strand Iris Cyc		2000	FFT	172/171	62/61			Cyc Wash
Cyc Truss	6	Strand Iris Cyc		2000	FFT	174/173	62/61			Cyc Wash
Cyc Truss	7	Strand Iris Cyc		2000	FFT	174/173	62/61			Cyc Wash
Cyc Truss	8	Strand Iris Cyc		2000	FFT	174/173	62/61			Cyc Wash
Cyc Truss	9	Strand Iris Cyc		2000	FFT	174/173	62/61			Cyc Wash
Cyc Truss	10	Strand Iris Cyc		2000	FFT	174/173	62/61			Cyc Wash

THE
Fitzgerald
THEATER

SL Ladders



Instrument Schedule(SL Ladders)

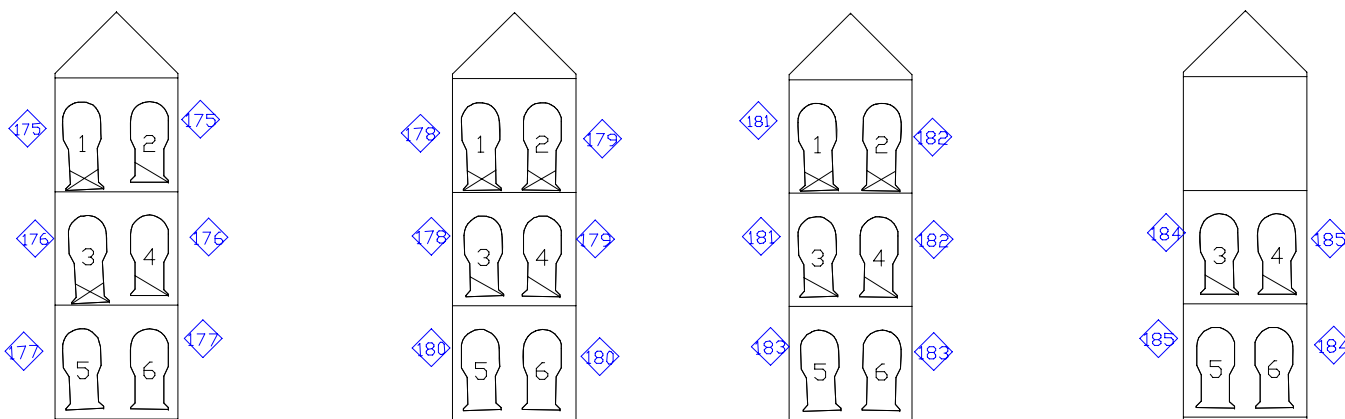
Venue: Fitzgerald Theater Show: House Plot
 Designer: Mike Wangen Assistant: Tom Campbell

1/23/2008 15:58

Position	Unit	Type	Lens	Wattage	Lamp	Dimmer	Channel	Colour	Gobo	Purpose
1st SL Ladder	1	Alt 6x16		575	FLK	125				Ladder Side
1st SL Ladder	2	Alt 6x12		575	FLK	125				Ladder Side
1st SL Ladder	3	Alt 6x16		575	FLK	126				Ladder Side
1st SL Ladder	4	Alt 6x12		575	FLK	126				Ladder Side
1st SL Ladder	5	Alt 6x9		575	FLK	127				Ladder Side
1st SL Ladder	6	Alt 6x9		575	FLK	127				Ladder Side
2nd SL Ladder	1	Alt 6x16		575	FLK	128				Ladder Side
2nd SL Ladder	2	Alt 6x16		575	FLK	129				Ladder Side
2nd SL Ladder	3	Alt 6x12		575	FLK	128				Ladder Side
2nd SL Ladder	4	Alt 6x12		575	FLK	129				Ladder Side
2nd SL Ladder	5	Alt 6x9		575	FLK	130				Ladder Side
2nd SL Ladder	6	Alt 6x9		575	FLK	130				Ladder Side
3rd SL Ladder	1	Alt 6x16		575	FLK	131				Ladder Side
3rd SL Ladder	2	Alt 6x16		575	FLK	132				Ladder Side
3rd SL Ladder	3	Alt 6x12		575	FLK	131				Ladder Side
3rd SL Ladder	4	Alt 6x12		575	FLK	132				Ladder Side
3rd SL Ladder	5	Alt 6x9		575	FLK					Ladder Side
3rd SL Ladder	6	Alt 6x9		575	FLK					Ladder Side
4th SL Ladder	3	Alt 6x12		575	FLK					Ladder Side
4th SL Ladder	4	Alt 6x12		575	FLK					Ladder Side
4th SL Ladder	5	Alt 6x9		575	FLK					Ladder Side
4th SL Ladder	6	Alt 6x9		575	FLK					Ladder Side



SR Ladders



Instrument Schedule(SR Ladders)

Venue: Fitzgerald Theater
Designer: Mike Wangen

Show: House Plot
Assistant: Tom Campbell

1/23/2008 15:57

Position	Unit	Type	Lens	Wattage	Lamp	Dimmer	Channel	Colour	Gobo	Purpose
1st SR Ladder	1	Alt 6x16		575	FLK	175				Ladder Side
1st SR Ladder	2	Alt 6x12		575	FLK	175				Ladder Side
1st SR Ladder	3	Alt 6x16		575	FLK	176				Ladder Side
1st SR Ladder	4	Alt 6x12		575	FLK	176				Ladder Side
1st SR Ladder	5	Alt 6x9		575	FLK	177				Ladder Side
1st SR Ladder	6	Alt 6x9		575	FLK	177				Ladder Side
2nd SR Ladder	1	Alt 6x16		575	FLK	178				Ladder Side
2nd SR Ladder	2	Alt 6x16		575	FLK	179				Ladder Side
2nd SR Ladder	3	Alt 6x12		575	FLK	178				Ladder Side
2nd SR Ladder	4	Alt 6x12		575	FLK	179				Ladder Side
2nd SR Ladder	5	Alt 6x9		575	FLK	180				Ladder Side
2nd SR Ladder	6	Alt 6x9		575	FLK	180				Ladder Side
3rd SR Ladder	1	Alt 6x16		575	FLK	181				Ladder Side
3rd SR Ladder	2	Alt 6x16		575	FLK	182				Ladder Side
3rd SR Ladder	3	Alt 6x12		575	FLK	181				Ladder Side
3rd SR Ladder	4	Alt 6x12		575	FLK	182				Ladder Side
3rd SR Ladder	5	Alt 6x9		575	FLK	183				Ladder Side
3rd SR Ladder	6	Alt 6x9		575	FLK	183				Ladder Side
4th SR Ladder	3	Alt 6x12		575	FLK	184				Ladder Side
4th SR Ladder	4	Alt 6x12		575	FLK	185				Ladder Side
4th SR Ladder	5	Alt 6x9		575	FLK	185				Ladder Side
4th SR Ladder	6	Alt 6x9		575	FLK	184				Ladder Side

THE
Fitzgerald
 THEATRE

(All Layers)

7/29/2013 16:44

Venue: Fitzgerald Theater
 Designer: Mike Wangen

Show: House Plot
 Assistant: Tom Campbell

Channel	Dimmer	Type	Lens	Position	Unit	Colour	Gobo	Purpose
1	1	Source 4 750	10 Degree	2nd Catwalk	1	R305		DSL Area
2	2	Source 4 750	10 Degree	2nd Catwalk	2	R305		2nd Cat Special
3	3	Source 4 750	10 Degree	2nd Catwalk	3	R305		2nd Cat Special
4	4	Source 4 750	10 Degree	2nd Catwalk	4	R305		2nd Cat Special
5	5	Source 4 750	10 Degree	2nd Catwalk	5	R305		2nd Cat Special
6	6	Source 4 750	10 Degree	2nd Catwalk	6	R305		DSC Area
7	7	Source 4 750	10 Degree	2nd Catwalk	7	R305		DSL Area
8	8	Source 4 750	10 Degree	2nd Catwalk	8	R305		2nd Cat Special
9	9	Source 4 750	10 Degree	2nd Catwalk	9	R305		2nd Cat Special
10	10	Source 4 750	10 Degree	2nd Catwalk	10	R305		2nd Cat Special
11	11	Source 4 750	10 Degree	2nd Catwalk	11	R305		2nd Cat Special
12	12	Source 4 750	10 Degree	2nd Catwalk	12	R305		DSR Area
13	13	Source 4 750	10 Degree	2nd Catwalk	13	R305		DSC Area
14	14	Source 4 750	10 Degree	2nd Catwalk	14	R305		2nd Cat Special
15	15	Source 4 750	10 Degree	2nd Catwalk	15	R305		2nd Cat Special
16	16	Source 4 750	10 Degree	2nd Catwalk	16	R305		2nd Cat Special
17	17	Source 4 750	10 Degree	2nd Catwalk	17	R305		2nd Cat Special
18	18	Source 4 750	10 Degree	2nd Catwalk	18	R305		DSR Area
21	49	Strand SL	SL 26 Degree	1st Box Boom SL	7	O/W		Box Wash
21	59	Strand SL	SL 26 Degree	1st Box Boom SR	7	O/W		Box Wash
22	46	Strand SL	SL 19 Degree	1st Box Boom SL	1	O/W		Box Wash
22	46	Strand SL	SL 26 Degree	1st Box Boom SL	2	O/W		Box Wash
22	56	Strand SL	SL 19 Degree	1st Box Boom SR	2	O/W		Box Wash
22	56	Strand SL	SL 26 Degree	1st Box Boom SR	1	O/W		Box Wash
23	47	Strand SL	SL 19 Degree	1st Box Boom SL	3	O/W		Box Wash
23	47	Strand SL	SL 26 Degree	1st Box Boom SL	4	O/W		Box Wash
23	57	Strand SL	SL 19 Degree	1st Box Boom SR	4	O/W		Box Wash
23	57	Strand SL	SL 26 Degree	1st Box Boom SR	3	O/W		Box Wash
24	48	Strand SL	SL 19 Degree	1st Box Boom SL	5	O/W		Box Wash
24	48	Strand SL	SL 26 Degree	1st Box Boom SL	6	O/W		Box Wash
24	58	Strand SL	SL 19 Degree	1st Box Boom SR	6	O/W		Box Wash
24	58	Strand SL	SL 26 Degree	1st Box Boom SR	5	O/W		Box Wash
25	41	Strand SL	SL 19 Degree	2nd Box Boom SL	2	O/W		Box Wash
25	51	Strand SL	SL 19 Degree	2nd Box Boom SR	2	O/W		Box Wash
26	42	Strand SL	SL 19 Degree	2nd Box Boom SL	4	O/W		Box Wash
26	52	Strand SL	SL 19 Degree	2nd Box Boom SR	4	O/W		Box Wash
27	43	Strand SL	SL 19 Degree	2nd Box Boom SL	6	O/W		Box Wash
27	53	Strand SL	SL 19 Degree	2nd Box Boom SR	6	O/W		Box Wash
28	45	Alt 6x16		2nd Balcony Rail	1	O/W		Balcony Wash
28	54	Alt 6x16		2nd Balcony Rail	6	O/W		Balcony Wash
29	44	Alt 6x16		2nd Balcony Rail	2	O/W		Balcony Wash
29	55	Alt 6x16		2nd Balcony Rail	5	O/W		Balcony Wash
30	64	Alt 6x9		1st Balcony Rail	3	O/W		Curtain Warmers
31	69	Alt 6x12		1st Electric	3	O/W		1st Elec Pipe Ends
31	69	Alt 6x9		1st Electric	1	O/W		1st Elec Pipe Ends
31	92	Alt 6x12		1st Electric	25	O/W		1st Elec Pipe Ends
31	92	Alt 6x9		1st Electric	27	O/W		1st Elec Pipe Ends
32	105	Alt 6x12		2nd Electric	3	O/W		2nd Elec Pipe Ends
32	105	Alt 6x9		2nd Electric	1	O/W		2nd Elec Pipe Ends
32	153	Alt 6x12		2nd Electric	25	O/W		2nd Elec Pipe Ends
32	153	Alt 6x9		2nd Electric	27	O/W		2nd Elec Pipe Ends
33	93	Alt 6x12		3rd Electric	3	O/W		3rd Elec Pipe Ends
33	93	Alt 6x9		3rd Electric	1	O/W		3rd Elec Pipe Ends
33	96	Alt 6x12		3rd Electric	30	O/W		3rd Elec Pipe Ends
33	96	Alt 6x9		3rd Electric	32	O/W		3rd Elec Pipe Ends
34	33	Alt 6x12		4th Electric	30	O/W		4th Elec Pipe Ends
34	33	Alt 6x9		4th Electric	32	O/W		4th Elec Pipe Ends
34	38	Alt 6x12		4th Electric	3	O/W		4th Elec Pipe Ends
34	38	Alt 6x9		4th Electric	1	O/W		4th Elec Pipe Ends
35	70	Alt 6x12		1st Electric	4	O/W		1st Elec Pipe Ends
35	70	Alt 6x9		1st Electric	2	O/W		1st Elec Pipe Ends
35	91	Alt 6x12		1st Electric	24	O/W		1st Elec Pipe Ends
35	91	Alt 6x9		1st Electric	26	O/W		1st Elec Pipe Ends

Channel	Dimmer	Type	Lens	Position	Unit	Colour	Gobo	Purpose
36	106	Alt 6x12		2nd Electric	4	O/W		2nd Elec Pipe Ends
36	106	Alt 6x9		2nd Electric	2	O/W		2nd Elec Pipe Ends
36	116	Alt 6x12		2nd Electric	24	O/W		2nd Elec Pipe Ends
36	116	Alt 6x9		2nd Electric	26	O/W		2nd Elec Pipe Ends
37	94	Alt 6x12		3rd Electric	4	O/W		3rd Elec Pipe Ends
37	94	Alt 6x9		3rd Electric	2	O/W		3rd Elec Pipe Ends
37	95	Alt 6x12		3rd Electric	29	O/W		3rd Elec Pipe Ends
37	95	Alt 6x9		3rd Electric	31	O/W		3rd Elec Pipe Ends
38	26	Alt 6x12		4th Electric	29	O/W		4th Elec Pipe Ends
38	26	Alt 6x9		4th Electric	31	O/W		4th Elec Pipe Ends
38	36	Alt 6x12		4th Electric	4	O/W		4th Elec Pipe Ends
38	36	Alt 6x9		4th Electric	2	O/W		4th Elec Pipe Ends
39	65	Strand SL	SL 10 Degree	1st Balcony Rail	5	O/W		1st Balcony Special
40	63	Alt 6x16		1st Balcony Rail	2	O/W		1st Balcony Special
40	68	Alt 6x16		1st Balcony Rail	7	O/W		1st Balcony Special
41	101	Source 4 Par	MFL	3rd Electric	22	TH		3rd Eelec Backs
41	104	Source 4 Par	MFL	3rd Electric	28	TH		3rd Eelec Backs
41	149	Source 4 Par	MFL	3rd Electric	8	TH		3rd Eelec Backs
41	152	Source 4 Par	MFL	3rd Electric	14	TH		3rd Eelec Backs
42	60	Source 4 Par	MFL	4th Electric	26	TH		4th Elec Backs
42	135	Source 4 Par	MFL	4th Electric	10	TH		4th Elec Backs
42	138	Source 4 Par	MFL	4th Electric	16	TH		4th Elec Backs
42	139	Source 4 Par	MFL	4th Electric	20	TH		4th Elec Backs
43	97	Source 4 Par	MFL	3rd Electric	15	TH		3rd Eelec Backs
43	100	Source 4 Par	MFL	3rd Electric	21	TH		3rd Eelec Backs
43	103	Source 4 Par	MFL	3rd Electric	27	TH		3rd Eelec Backs
43	150	Source 4 Par	MFL	3rd Electric	9	TH		3rd Eelec Backs
44	50	Source 4 Par	MFL	4th Electric	27	TH		4th Elec Backs
44	134	Source 4 Par	MFL	4th Electric	9	TH		4th Elec Backs
44	137	Source 4 Par	MFL	4th Electric	15	TH		4th Elec Backs
44	140	Source 4 Par	MFL	4th Electric	21	TH		4th Elec Backs
45	98	Source 4 Par	MFL	3rd Electric	16	TH		3rd Eelec Backs
45	99	Source 4 Par	MFL	3rd Electric	20	TH		3rd Eelec Backs
45	102	Source 4 Par	MFL	3rd Electric	26	TH		3rd Eelec Backs
45	151	Source 4 Par	MFL	3rd Electric	10	TH		3rd Eelec Backs
46	40	Source 4 Par	MFL	4th Electric	28	TH		4th Elec Backs
46	61	Source 4 Par	MFL	4th Electric	22	TH		4th Elec Backs
46	133	Source 4 Par	MFL	4th Electric	8	TH		4th Elec Backs
46	136	Source 4 Par	MFL	4th Electric	14	TH		4th Elec Backs
47	107	Source 4 Par	MFL	2nd Electric	11	TH		2nd Elec Back
47	115	Source 4 Par	MFL	2nd Electric	20	TH		2nd Elec Back
48	108	Source 4 Par	MFL	2nd Electric	12	TH		2nd Elec Back
48	114	Source 4 Par	MFL	2nd Electric	19	TH		2nd Elec Back
49	154	Source 4 Par	NSP	2nd Electric	13	O/W		
51	109	Alt 6x12		2nd Electric	7	O/W		2nd Elec Special
52	110	Alt 6x12		2nd Electric	10	O/W		2nd Elec Special
53	111	Alt 6x12		2nd Electric	14	O/W		2nd Elec Special
54	112	Alt 6x12		2nd Electric	18	O/W		2nd Elec Special
55	113	Alt 6x12		2nd Electric	21	O/W		2nd Elec Special
56	19	Source 4 Par	NSP	2nd Electric	6	O/W		2nd Elec Diag Back
57	20	Source 4 Par	NSP	2nd Electric	23	O/W		2nd Elec Diag Back
58	71	Source 4 Par	MFL	1st Electric	5	O/W		1st Elec Par Sides
58	90	Source 4 Par	MFL	1st Electric	23	O/W		1st Elec Par Sides
59	73	Source 4 Par	MFL	1st Electric	7	O/W		1st Elec Par Sides
59	88	Source 4 Par	MFL	1st Electric	21	O/W		1st Elec Par Sides
60	74	Source 4 Par	MFL	1st Electric	8	O/W		1st Elec Par Sides
60	87	Source 4 Par	MFL	1st Electric	20	O/W		1st Elec Par Sides
61/62	172/171	Strand Iris Cyc		Cyc Truss	1	O/W		Cyc Wash
61/62	174/173	Strand Iris Cyc		Cyc Truss	10	O/W		Cyc Wash
63	117	Source 4 Par	NSP	5th Electric	6	O/W		5th Elec Backs
63	118	Source 4 Par	NSP	5th Electric	16	O/W		5th Elec Backs
63	156	Source 4 Par	NSP	5th Electric	10	O/W		5th Elec Backs
64	119	Source 4 Par	NSP	5th Electric	11	O/W		5th Elec Backs
64	120	Source 4 Par	NSP	5th Electric	5	O/W		5th Elec Backs
64	124	Source 4 Par	NSP	5th Electric	17	O/W		5th Elec Backs
65	121	Source 4 Par	NSP	5th Electric	12	O/W		5th Elec Backs
65	122	Source 4 Par	NSP	5th Electric	4	O/W		5th Elec Backs

Channel	Dimmer	Type	Lens	Position	Unit	Colour	Gobo	Purpose
65	123	Source 4 Par	NSP	5th Electric	18	O/W		5th Elec Backs